



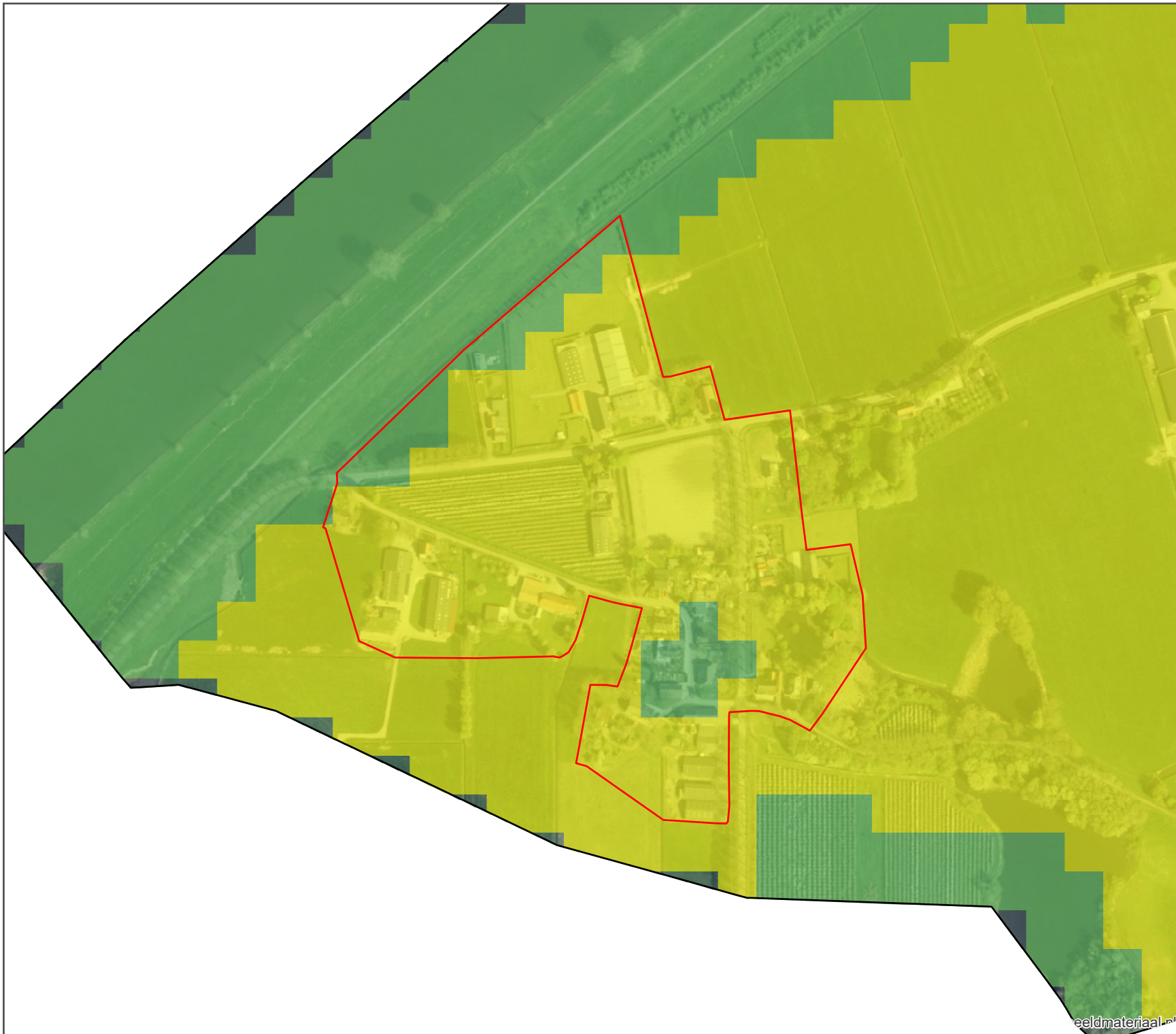
Klimaatstresstest

Hittestressanalyse:
mate van hittestress

Kern Doeveren

Mate van hittestress

-  Comfortabel (18-23 °C)
-  Lichte hittestress (23-29 °C)
-  Matige hittestress (29-35 °C)
-  Sterke hittestress (35-41 °C)
-  Extreme hittestress (>41 °C)




opdrachtgever: **Gemeente Heusden**

 **ARCADIS** | Design & Consultancy
for natural and built assets

datum: 28-May-19 C03131.000059

schaal (A4): 1:4.000 ES

0 60 120 180

 Meters



beeldmateriaal.nl

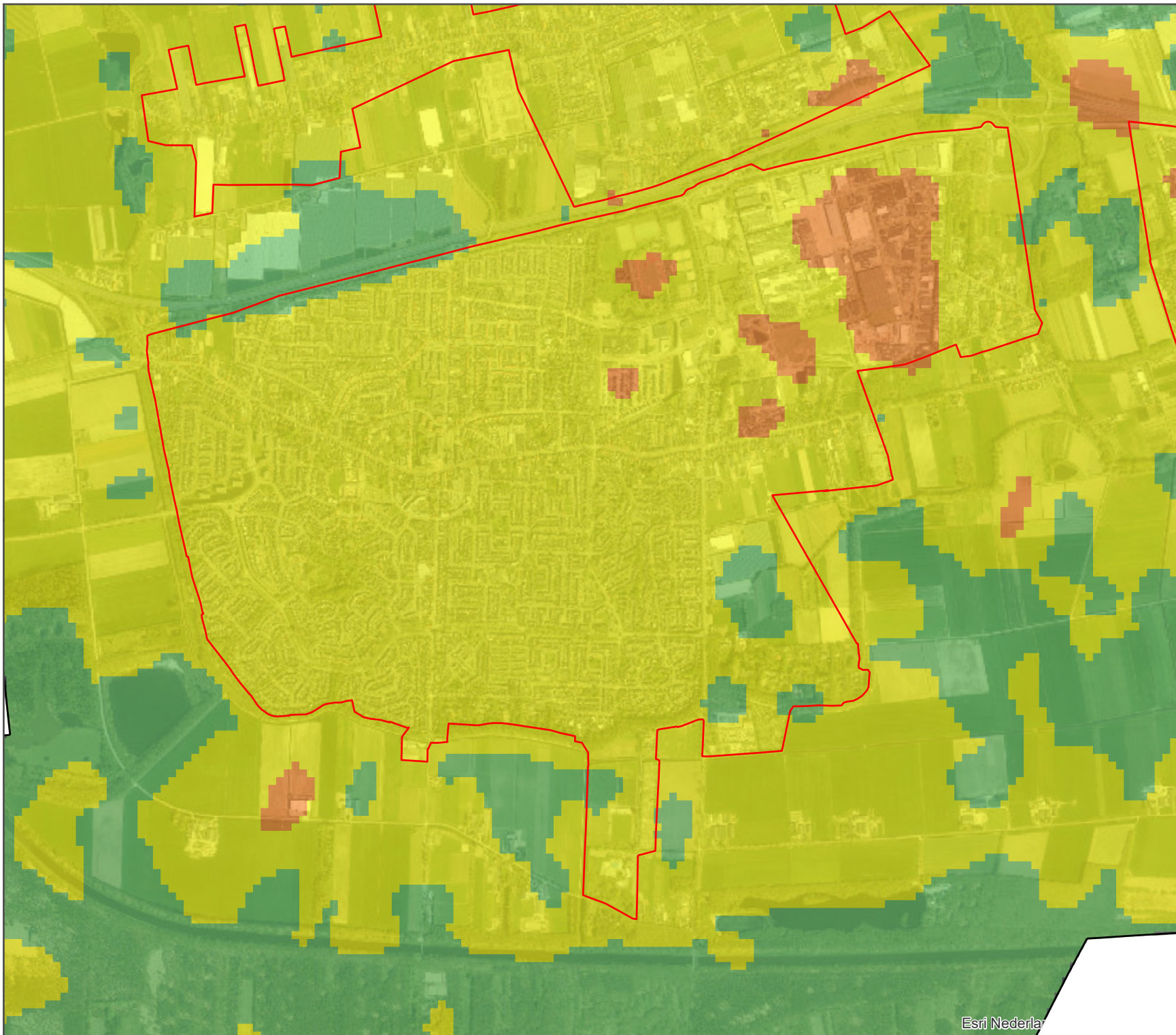
Klimaatstresstest

Hittestressanalyse:
mate van hittestress

Kern Drunen

Mate van hittestress

-  Comfortabel (18-23 °C)
-  Lichte hittestress (23-29 °C)
-  Matige hittestress (29-35 °C)
-  Sterke hittestress (35-41 °C)
-  Extreme hittestress (>41 °C)




opdrachtgever: **Gemeente Heusden**



datum: 28-May-19 C03131.000059

schaal (A4): 1:20,000 ES

0 310 620 930

 Meters

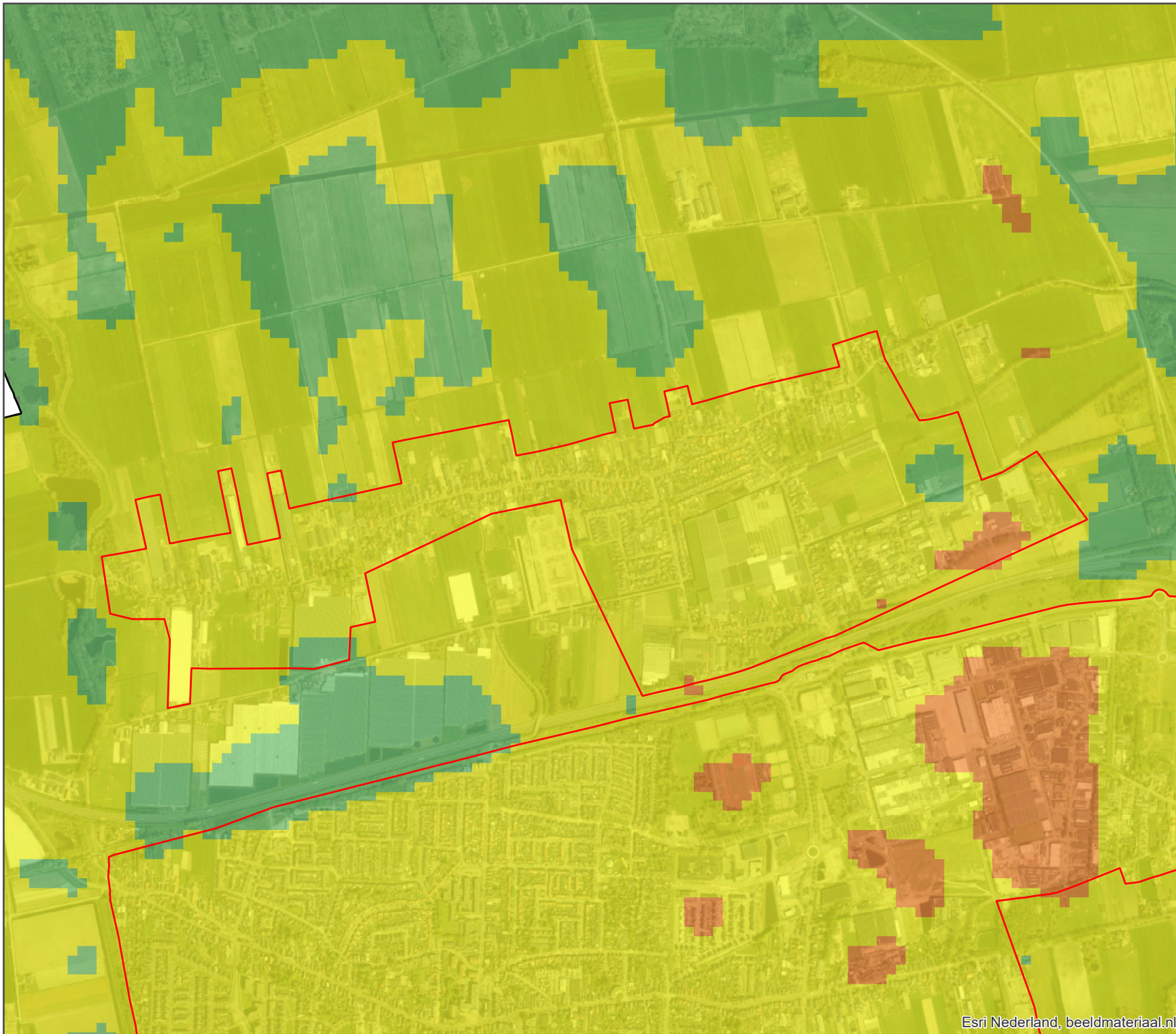
Klimaatstresstest

Hittestressanalyse:
mate van hittestress

Kern Elshout

Mate van hittestress

- Comfortabel (18-23 °C)
- Lichte hittestress (23-29 °C)
- Matige hittestress (29-35 °C)
- Sterke hittestress (35-41 °C)
- Extreme hittestress (>41 °C)



opdrachtgever: **Gemeente Heusden**

ARCADIS Design & Consultancy
for natural and
built assets

datum: 28-May-19 C03131.000059

schaal (A4): 1:16,000 ES

0 250 500 750

Meters

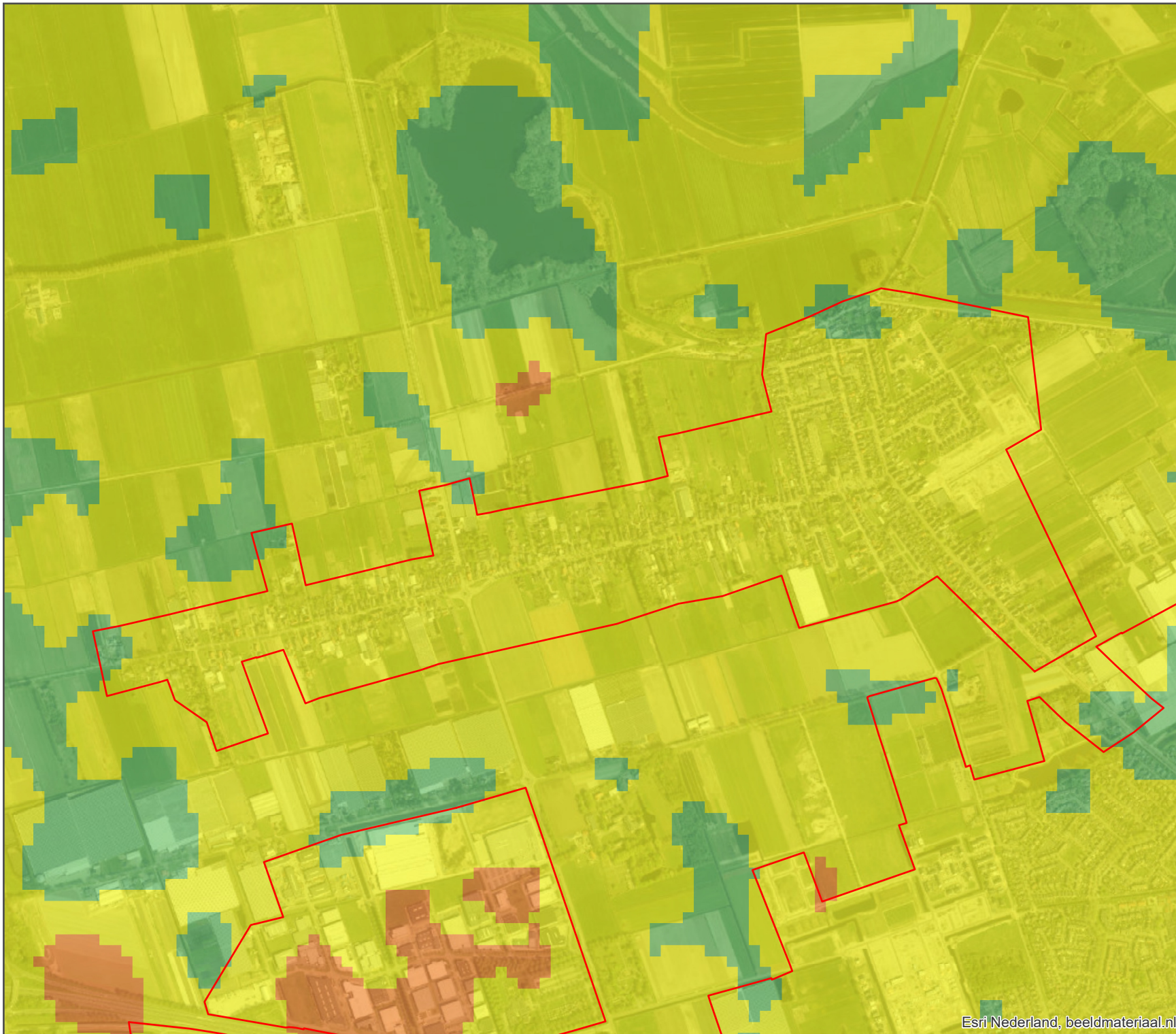
Klimaatstresstest

Hittestressanalyse:
mate van hittestress

Kern Haarsteeg

Mate van hittestress

- Comfortabel (18-23 °C)
- Lichte hittestress (23-29 °C)
- Matige hittestress (29-35 °C)
- Sterke hittestress (35-41 °C)
- Extreme hittestress (>41 °C)



opdrachtgever: **Gemeente Heusden**



datum: 28-May-19 C03131.000059

schaal (A4): 1:14,000 ES

0 210 420 630

Meters

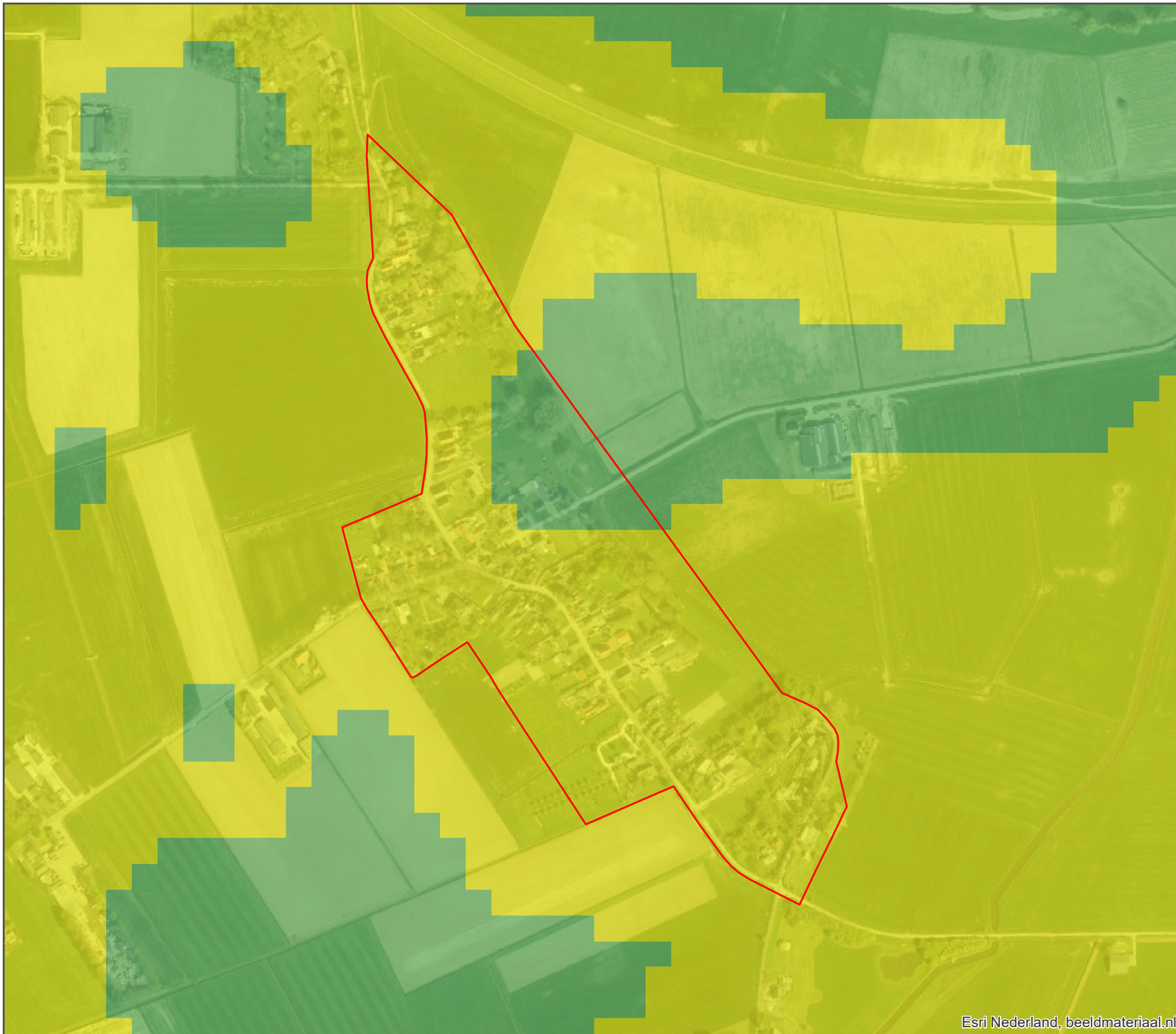
Klimaatstresstest

Hittestressanalyse:
mate van hittestress

Kern Hedikhuizen

Mate van hittestress

-  Comfortabel (18-23 °C)
-  Lichte hittestress (23-29 °C)
-  Matige hittestress (29-35 °C)
-  Sterke hittestress (35-41 °C)
-  Extreme hittestress (>41 °C)



opdrachtgever: **Gemeente Heusden**



datum: 28-May-19 C03131.000059

schaal (A4): 1:6,000 ES

0 90 180 270

Meters

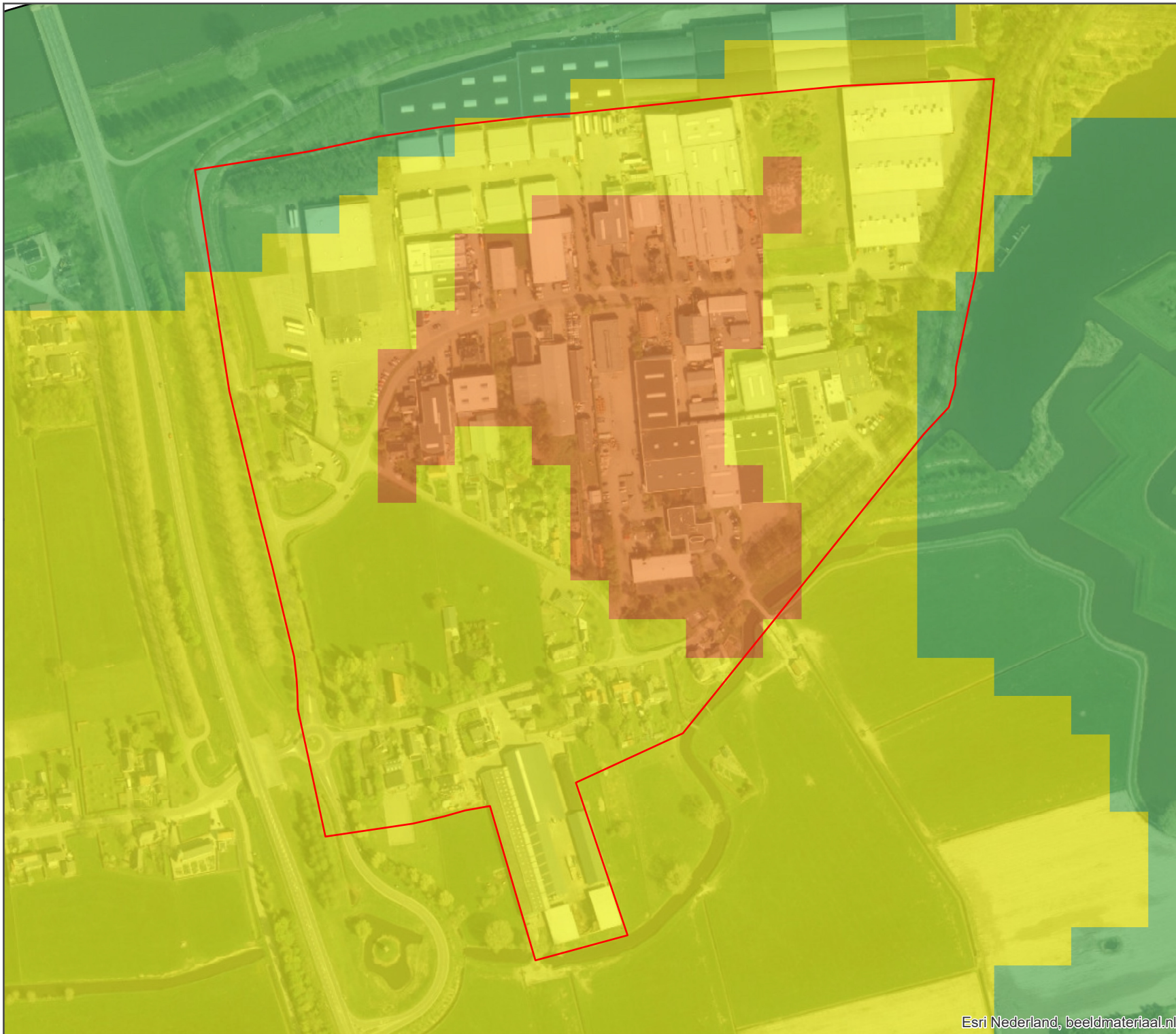
Klimaatstresstest

Hittestressanalyse:
mate van hittestress

Kern Heesbeen

Mate van hittestress

-  Comfortabel (18-23 °C)
-  Lichte hittestress (23-29 °C)
-  Matige hittestress (29-35 °C)
-  Sterke hittestress (35-41 °C)
-  Extreme hittestress (>41 °C)



opdrachtgever: **Gemeente Heusden**



datum: 28-May-19 C03131.000059

schaal (A4): 1:4.000 ES

0 60 120 180

Meters

Klimaatstresstest

Hittestressanalyse:
mate van hittestress

Kern Herpt

Mate van hittestress

-  Comfortabel (18-23 °C)
-  Lichte hittestress (23-29 °C)
-  Matige hittestress (29-35 °C)
-  Sterke hittestress (35-41 °C)
-  Extreme hittestress (>41 °C)



opdrachtgever: **Gemeente Heusden**



datum: 28-May-19 C03131.000059

schaal (A4): 1:6,000 ES

0 90 180 270


Meters

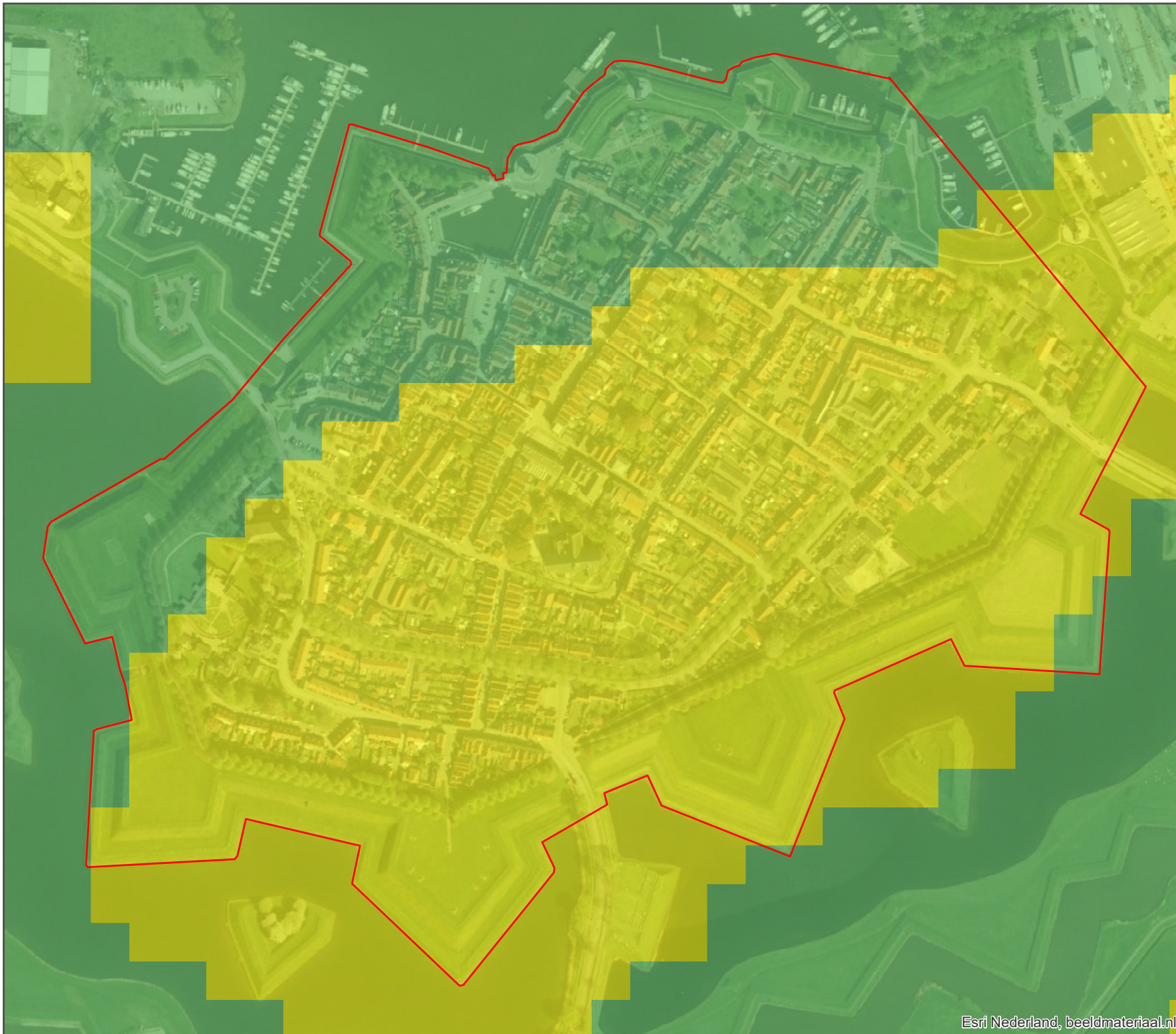
Klimaatstresstest

Hittestressanalyse:
mate van hittestress

Kern Heusden

Mate van hittestress

-  Comfortabel (18-23 °C)
-  Lichte hittestress (23-29 °C)
-  Matige hittestress (29-35 °C)
-  Sterke hittestress (35-41 °C)
-  Extreme hittestress (>41 °C)



opdrachtgever: **Gemeente Heusden**



datum: 28-May-19 C03131.000059

schaal (A4): 1:4.000 ES

0 60 120 180

Meters

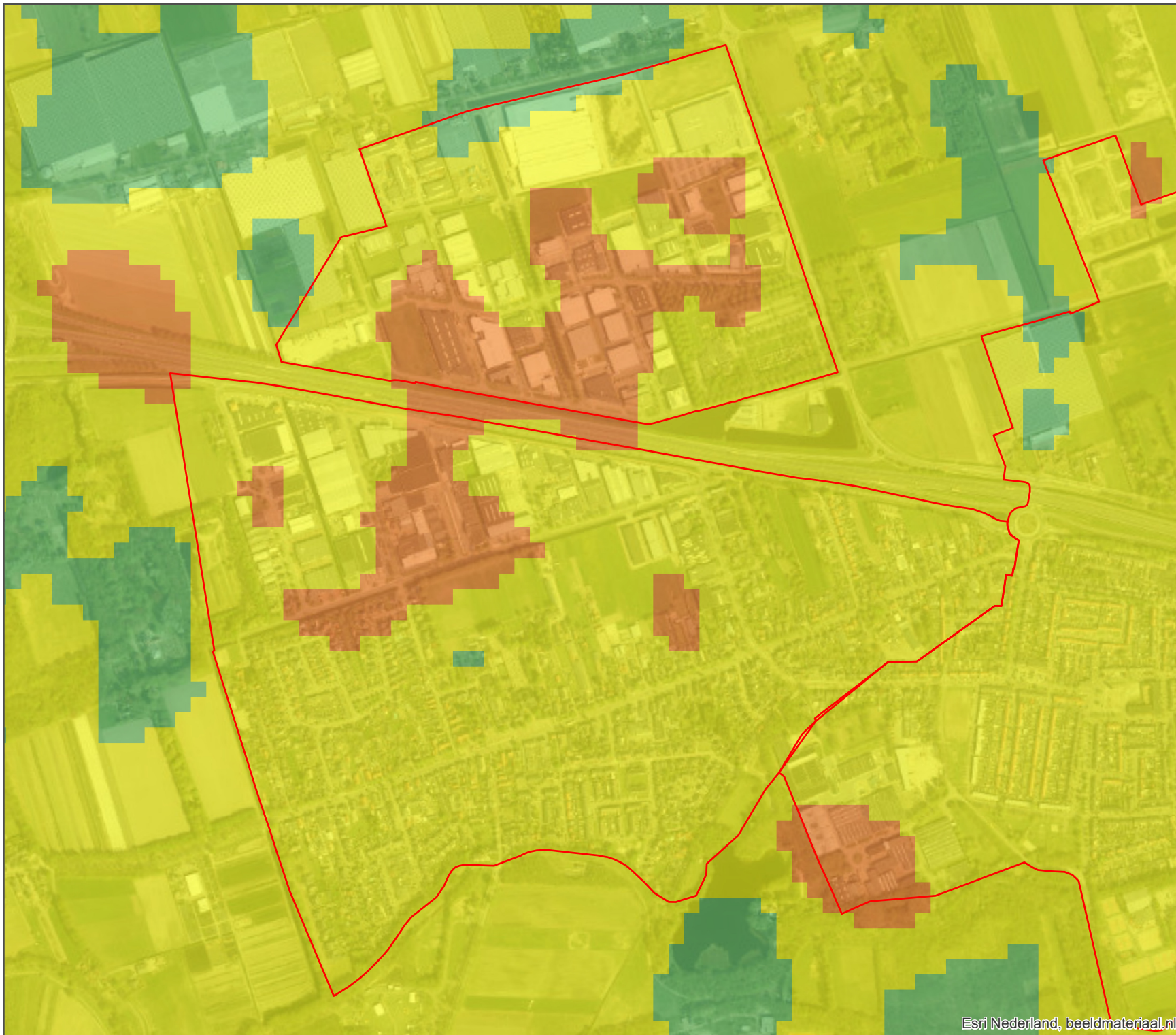
Klimaatstresstest

Hittestressanalyse:
mate van hittestress

Kern Nieuwkuijk

Mate van hittestress

- Comfortabel (18-23 °C)
- Lichte hittestress (23-29 °C)
- Matige hittestress (29-35 °C)
- Sterke hittestress (35-41 °C)
- Extreme hittestress (>41 °C)



opdrachtgever: **Gemeente Heusden**



datum: 28-May-19 C03131.000059

schaal (A4): 1:10,000 ES

0 150 300 450

Meters

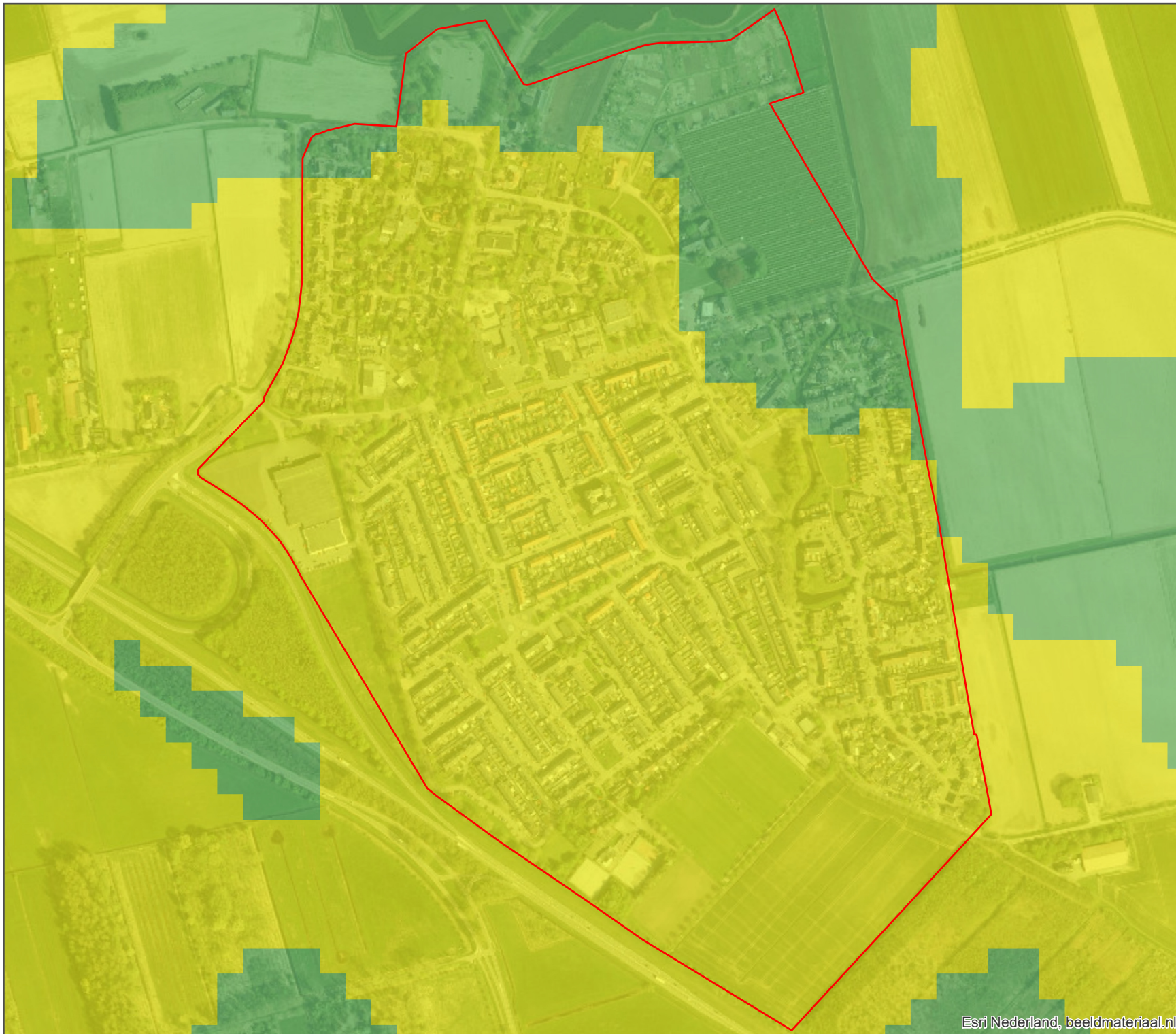
Klimaatstresstest

Hittestressanalyse:
mate van hittestress

Kern Oudheusden

Mate van hittestress

-  Comfortabel (18-23 °C)
-  Lichte hittestress (23-29 °C)
-  Matige hittestress (29-35 °C)
-  Sterke hittestress (35-41 °C)
-  Extreme hittestress (>41 °C)



opdrachtgever: Gemeente Heusden

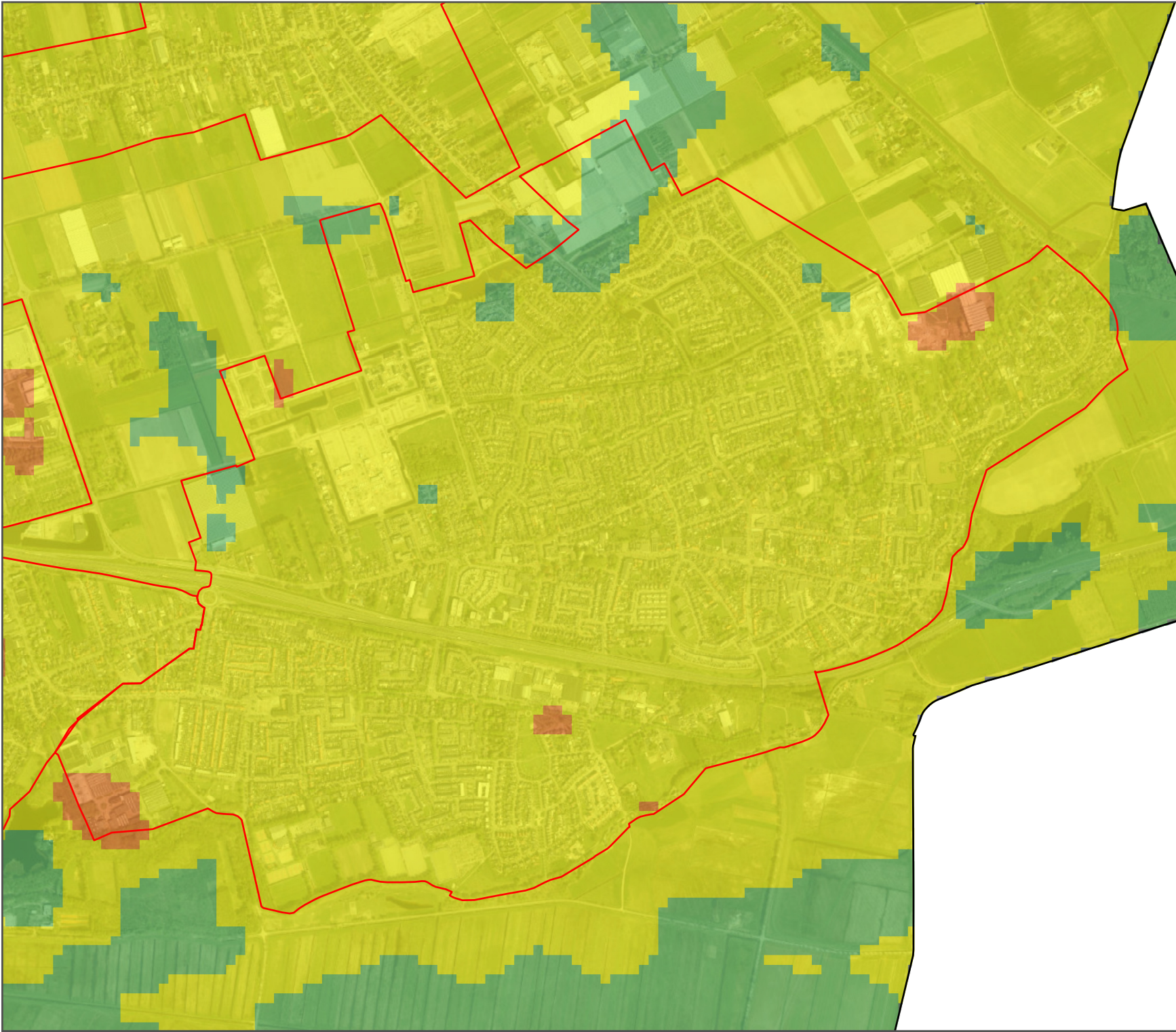


datum: 28-May-19 C03131.000059

schaal (A4): 1:6,000 ES

0 90 180 270

Meters



Klimaatstresstest

Hittestressanalyse:
mate van hittestress

Kern Vlijmen

- ### Mate van hittestress
- Comfortabel (18-23 °C)
 - Lichte hittestress (23-29 °C)
 - Matige hittestress (29-35 °C)
 - Sterke hittestress (35-41 °C)
 - Extreme hittestress (>41 °C)

opdrachtgever: **Gemeente Heusden**



datum: 28-May-19 C03131.000059
schaal (A4): 1:16,000 ES
0 250 500 750 Meters