


Klimaatstresstest

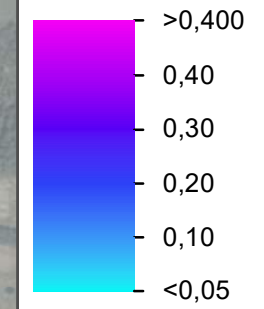
Wateroverlast 70mm

Kern: Heeze

 2Drekengrenzen

 Gemeentegrens

Waterdiepte (m)



Kwetsbare gebouwen

-  Overige panden
-  Seniorencomplex, woonverblijf of tehuis
-  Publieksgebouw
-  Hotel / Pension
-  Onderwijsinstelling
-  Ziekenhuis



opdrachtgever: Gemeente Heeze-Leende



datum: 16-Jul-19 C03071.000768

schaal (A3): 1:16,000



ES

Klimaatstresstest

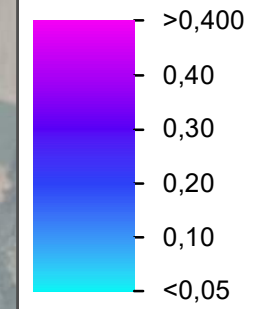
Wateroverlast 70mm

Kern: Leende

 2Drekengrenzen

 Gemeentegrens

Waterdiepte (m)



Kwetsbare gebouwen

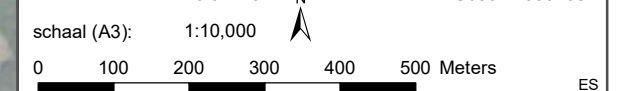
-  Overige panden
-  Seniorencomplex, woonverblijf of tehuis
-  Publieksgebouw
-  Hotel / Pension
-  Onderwijsinstelling
-  Ziekenhuis



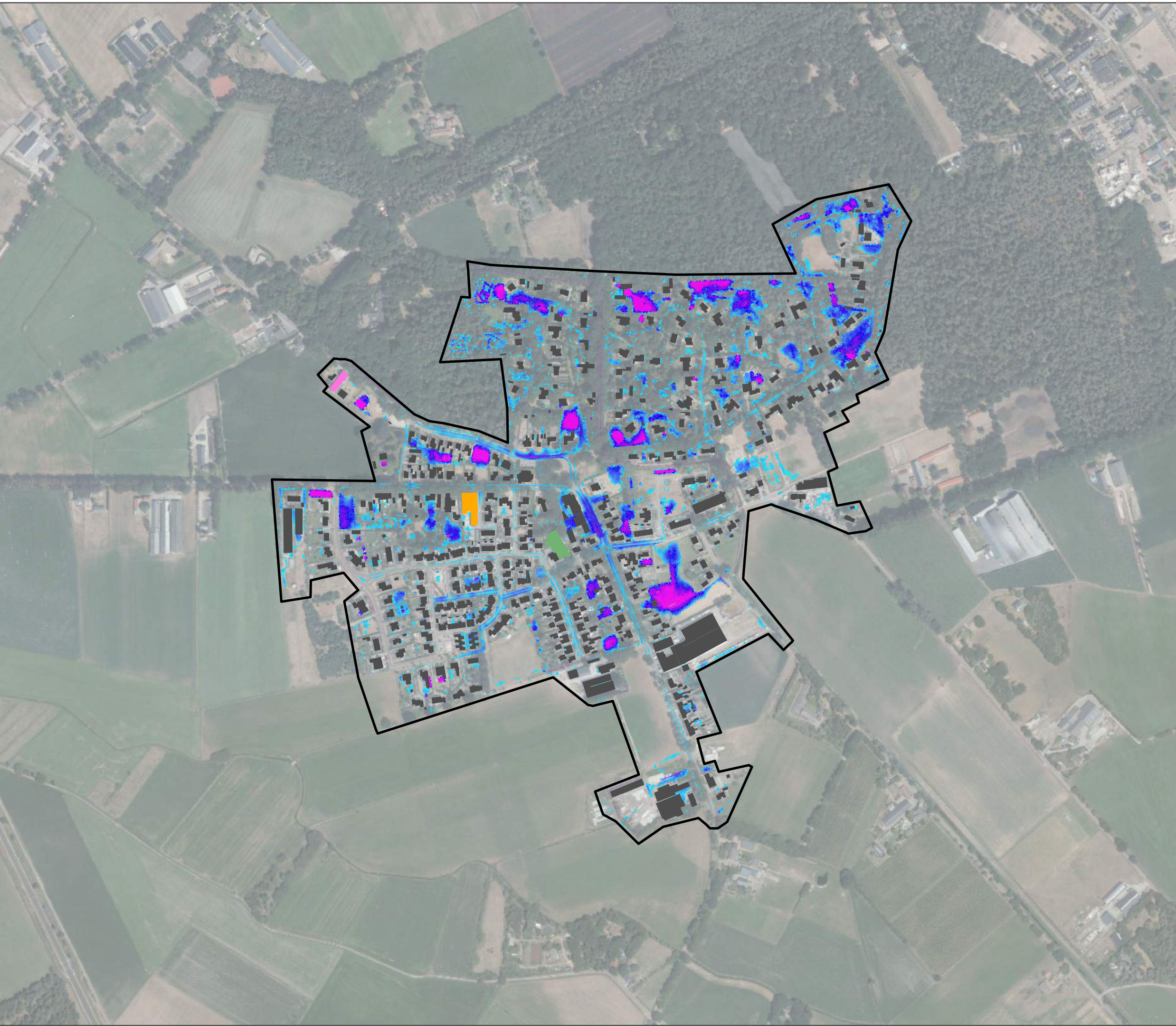
opdrachtgever: Gemeente Heeze-Leende



datum: 16-Jul-19 C03071.000768





ES

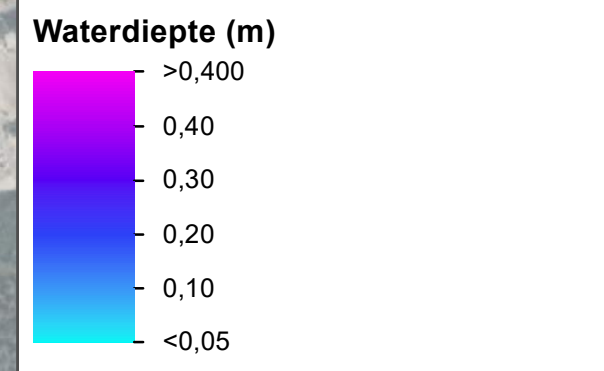



Klimaatstresstest

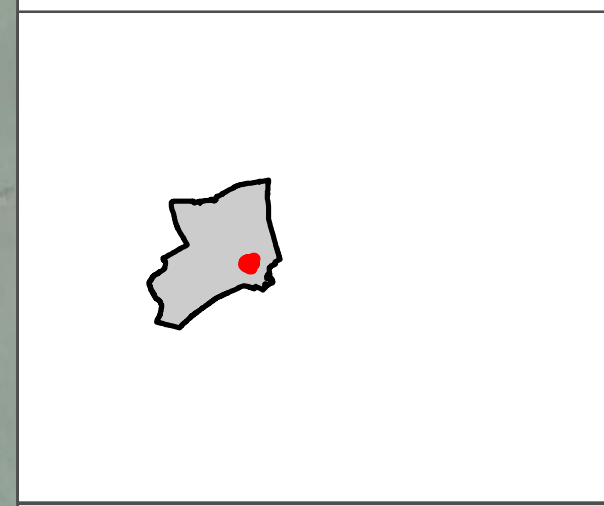
Wateroverlast 70mm

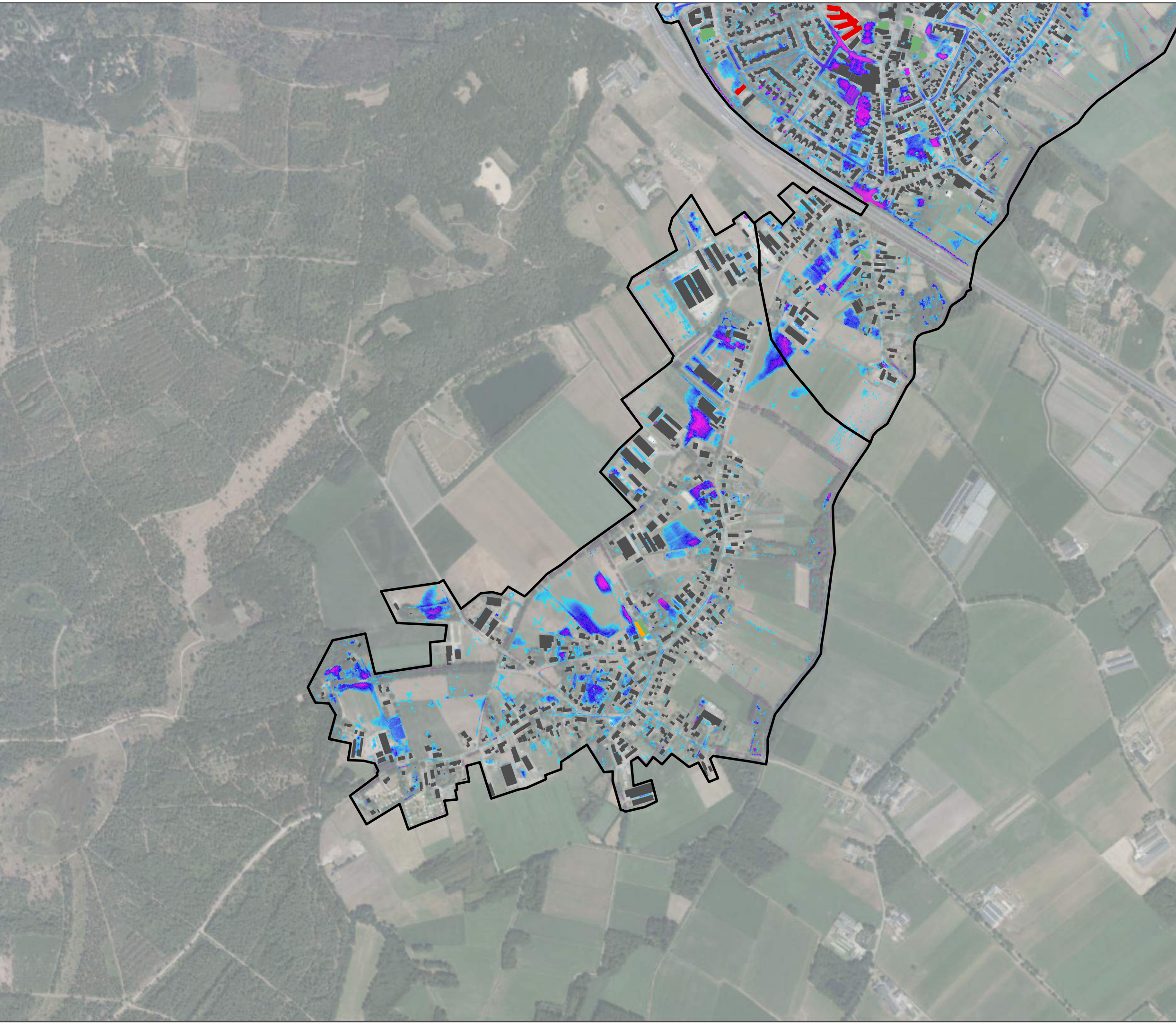
Kern: Sterksel

-  2Drekengrenzen
-  Gemeentegrens



- ### Kwetsbare gebouwen
-  Overige panden
 -  Seniorencomplex, woonverblijf of tehuis
 -  Publieksgebouw
 -  Hotel / Pension
 -  Onderwijsinstelling
 -  Ziekenhuis





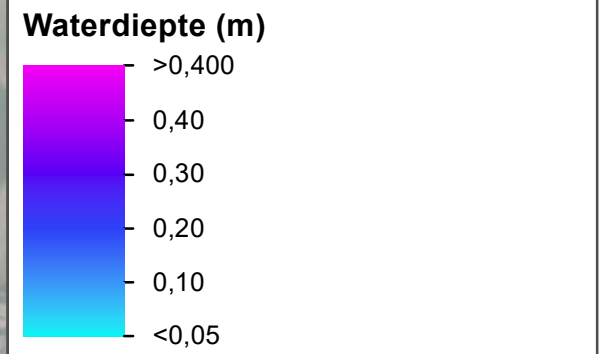



Klimaatstresstest

Wateroverlast 70mm

Kern: Leenderstrip

-  2Drekengrenzen
-  Gemeentegrens



- Kwetsbare gebouwen**
-  Overige panden
 -  Seniorencomplex, woonverblijf of tehuis
 -  Publieksgebouw
 -  Hotel / Pension
 -  Onderwijsinstelling
 -  Ziekenhuis

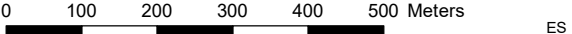


opdrachtgever: Gemeente Heeze-Leende



datum: 16-Jul-19 C03071.000768

schaal (A3): 1:10,000



0 100 200 300 400 500 Meters ES