


# Klimaatstresstest Reusel-De Mierden Lage Mierde 160 mm


## Legenda

 2d Rekengrenzen

## Kwetsbare objecten

### Type

 Overige panden

 Onderwijsinstelling

 Publieksgebouw

### Waterdiepte (m)

 >0,400

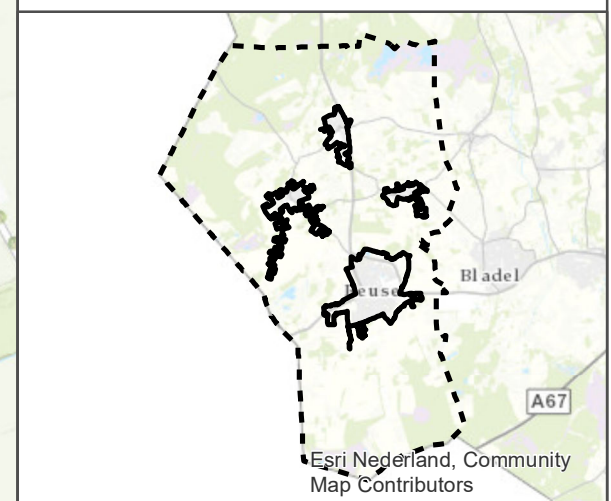
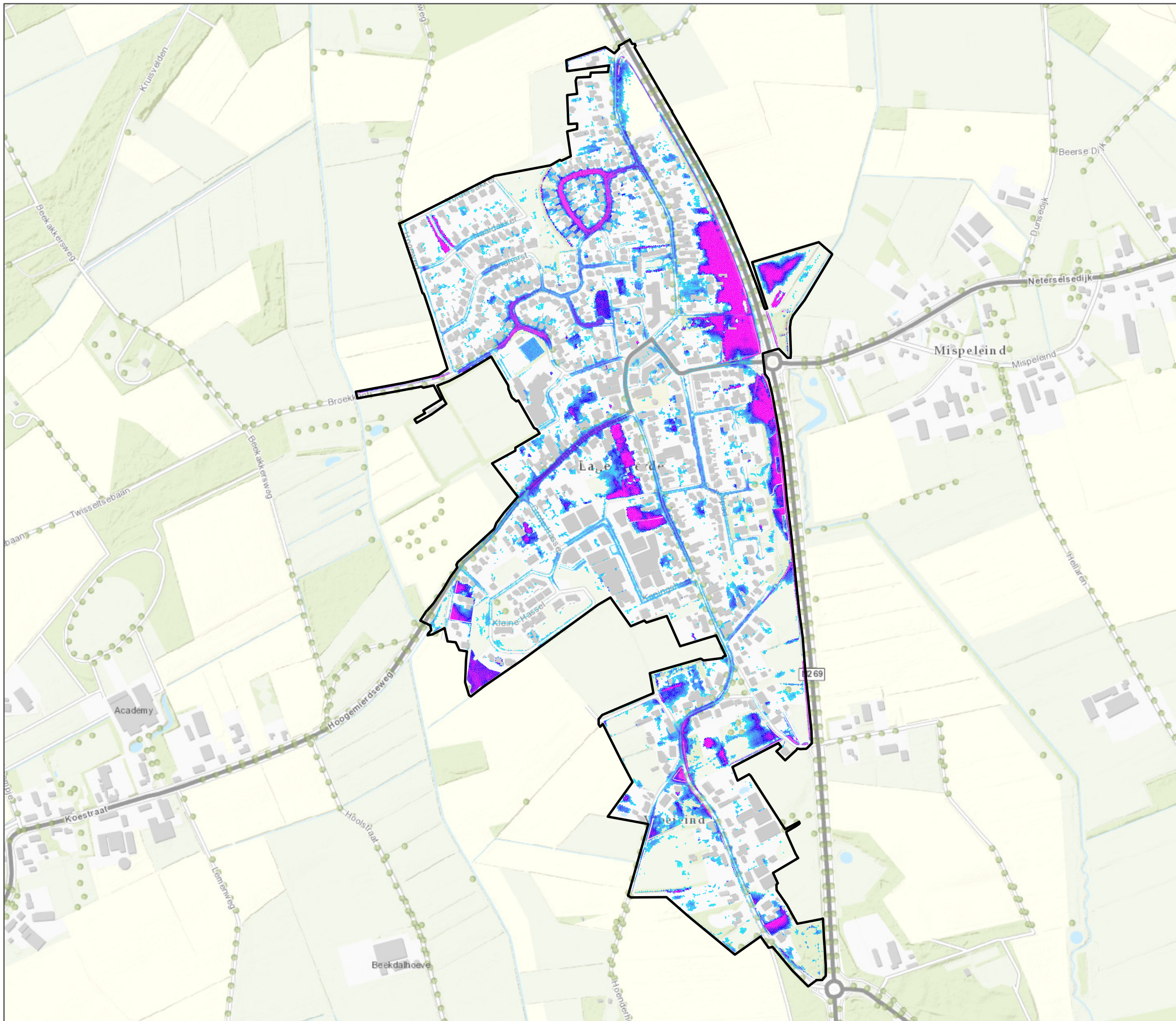
 0,40

 0,30

 0,20

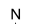
 0,10

 <0,05



opdrachtgever: Gemeente Reusel-De Mierden

 **ARCADIS** Design & Consultancy  
for natural and built assets


datum: 23-Jan-19  C03071.000768

schaal (A3): 1:7.000

0 60 120 180 240 300 Meters

# Klimaatstresstest Reusel-De Mierden Hoge Mierde 160 mm

## Legenda

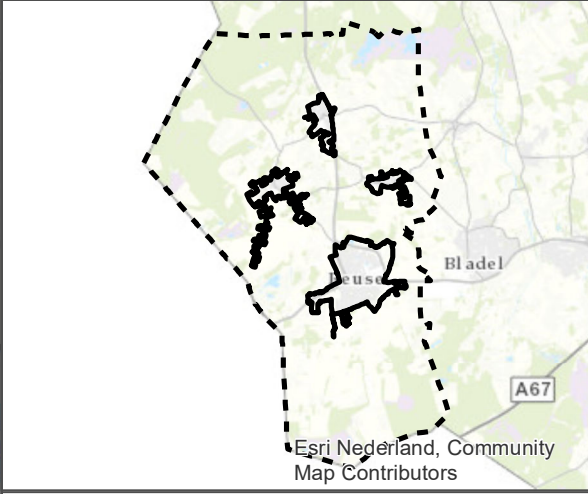
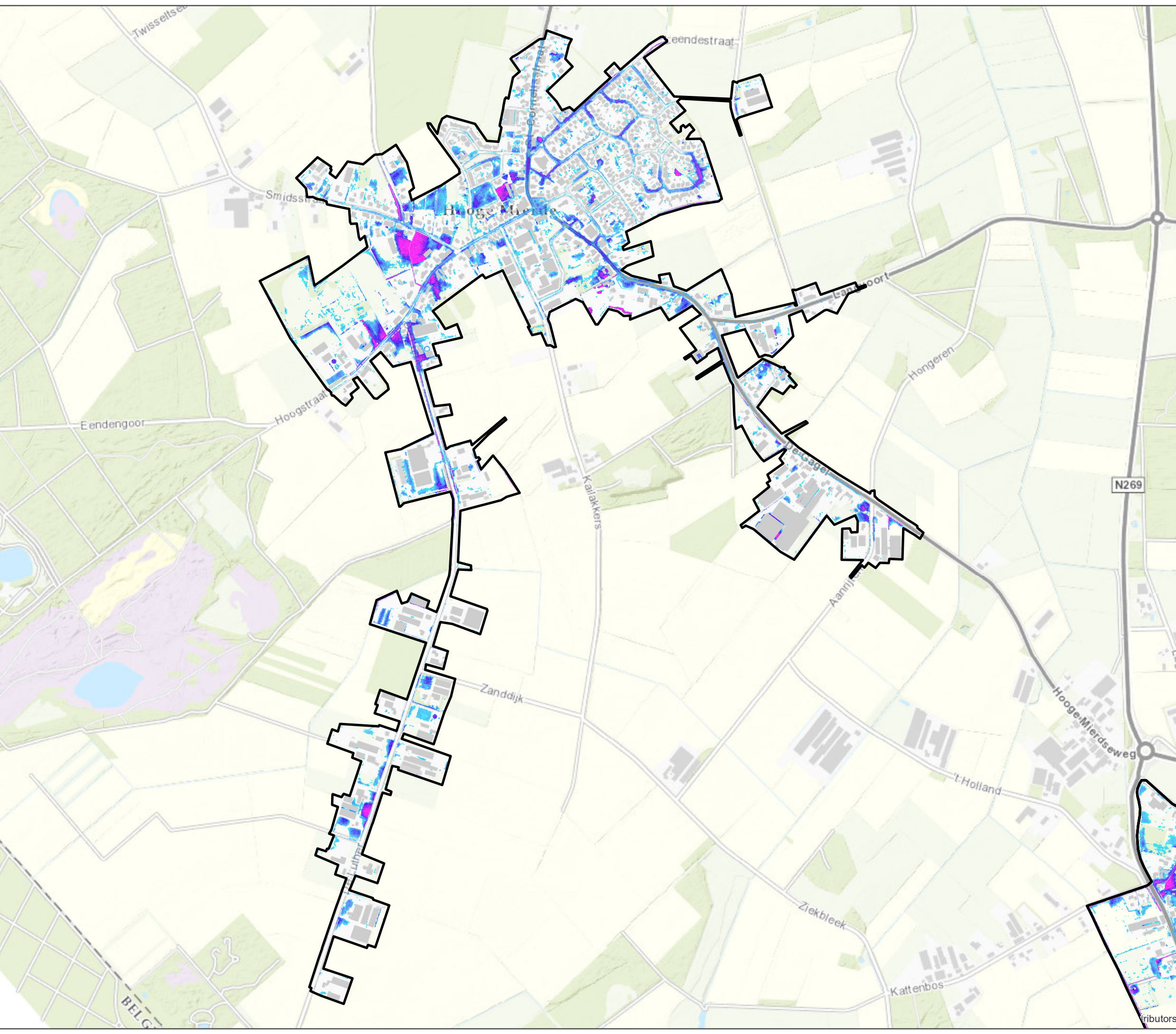
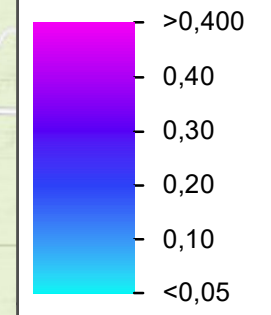
 2d Rekengrenzen

## Kwetsbare objecten

### Type

-  Overige panden
-  Onderwijsinstelling
-  Publieksgebouw

### Waterdiepte (m)



opdrachtgever: Gemeente Reusel-De Mierden



datum: 23-Jan-19 C03071.000768


schaal (A3): 1:11,000



ES

# Klimaatstresstest Reusel-De Mierden Husel 160 mm


## Legenda

 2d Rekengrenzen

## Kwetsbare objecten

### Type

 Overige panden

 Onderwijsinstelling

 Publieksgebouw

### Waterdiepte (m)

 >0,400

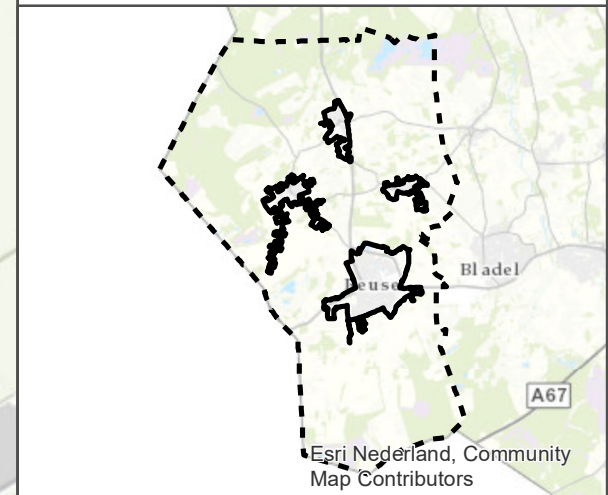
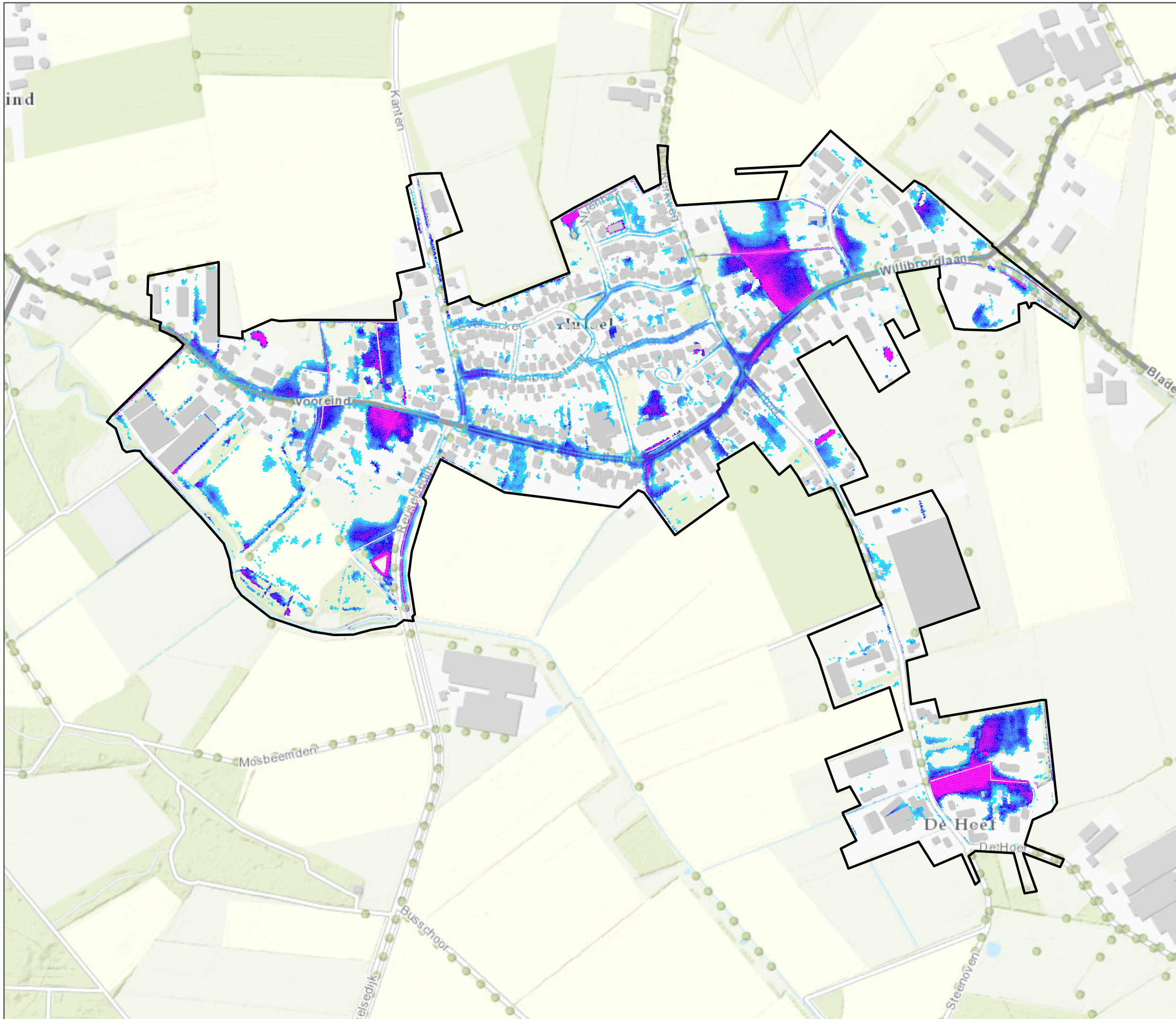
 0,40

 0,30

 0,20



 0,10

 <0,05




opdrachtgever: Gemeente Reusel-De Mierden



datum: 23-Jan-19  C03071.000768  
schaal (A3): 1:5,000  
0 40 80 120 160 200 Meters  ES

# Klimaatstresstest Reusel-De Mierden Reusel 160 mm

## Legenda

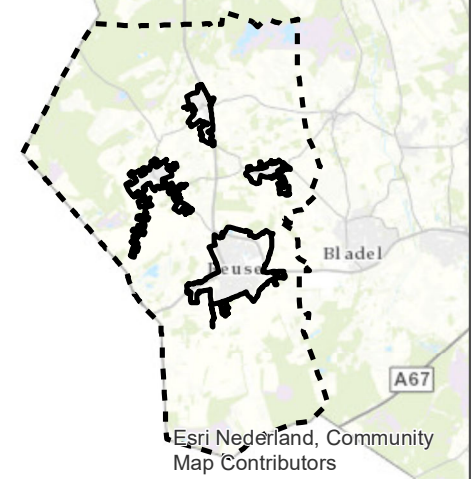
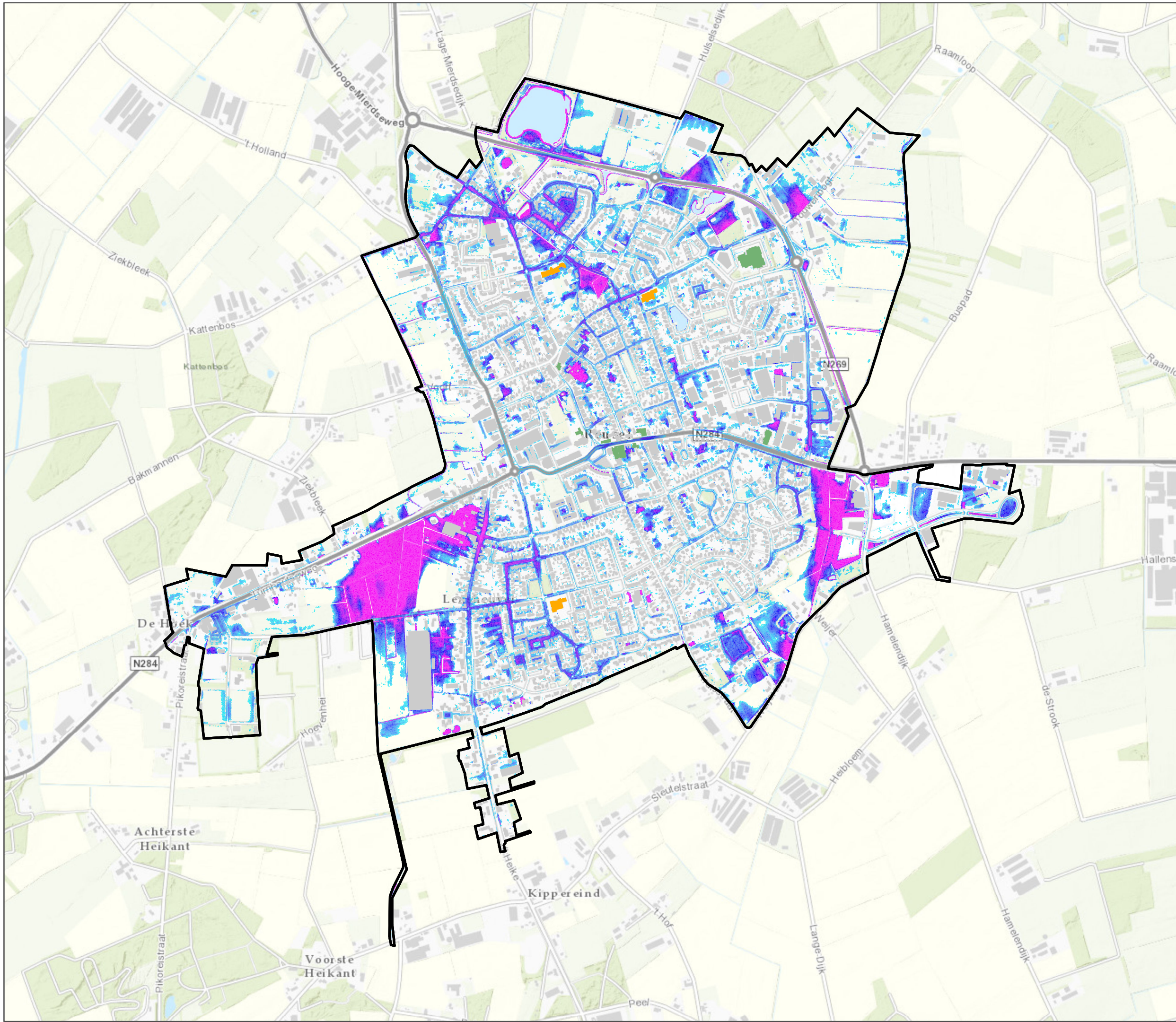
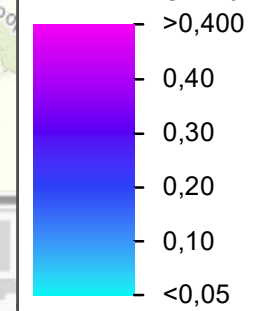
 2d Rekengrenzen

## Kwetsbare objecten

### Type

-  Overige panden
-  Onderwijsinstelling
-  Publieksgebouw

### Waterdiepte (m)



opdrachtgever: Gemeente Reusel-De Mierden



datum: 23-Jan-19 N C03071.000768

